

### **EVENTS WITH UK BIKE TRANSPORT - WINTER 24/25 SEASON**

THIS LIST IS UPDATED AS DATES PASS AND NEWS DATES/DETAILS ARE ADDED

#### **ALMERIA THU 24 TO SUN 27 APRIL 25**

**4 DAYS + BIKE TRANSPORT + 4 NIGHTS**

**4-STAR HB: £799 until 14 Mar, then £849**

See below for transport details/options and more event info.

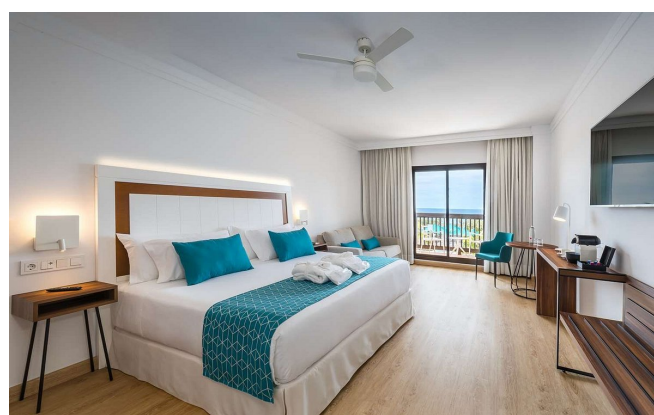
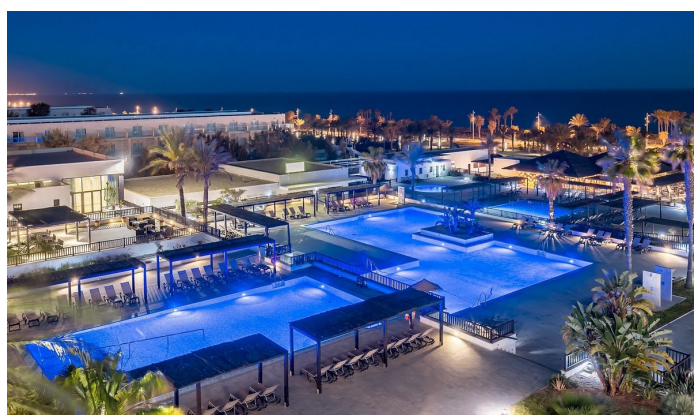
**No transport:** Deduct £140. **No hotel:** Deduct £90.

**Hotel:** The best in the area. 4-star spa hotel on the beach just outside Almeria (30 min. from the circuit).

Half board incl. breakfast, dinner, 20% discount at the bar and 20% discount on spa treatments.

Extra nights & non-riders £50pppn,  
single occupancy rooms +£30pn.

**Nearest airports:** Almeria ¼h, Murcia 2h,  
Malaga 2½h, Alicante 2¾h.



#### **ALMERIA 24-27 APRIL BIKE TRANSPORT DATES & OPTIONS**

<b>Location</b>	<b>Collection</b>	<b>Return</b>	<b>Cost/bike each way</b>
Sandy, Beds.	20 Apr 08.00-12.00	04 May 08.00-12.00	£0
Sandy, Beds	By prior appointment	By prior appointment	£20
Telford	16 Apr 14.00	05 May 14.00	£55
Liverpool (Maghull)	17 Apr 09.30	06 May 09.30	£70
Falkirk	17 Apr 15.00	06 May 15.00	£100
Bedale	18 Apr 08.00	07 May 08.00	£70
Chesterfield	18 Apr 11.00	07 May 11.00	£70

Bangor (Northern Ireland) & Southampton also available – contact us for details.

**0.5% Goods Value (carnet) Fee applies for all transport bookings (see below).**

## **MORE INFO (applies to all events):**

**ALL EVENTS INCLUDE** live timing, use of a transponder, free access to lap times, groups arranged by lap times, and shared space in a garage/box. Event formats vary, but we typically provide 6 x 20-minute sessions per group per day.

**UK BIKE TRANSPORT** is available for the selected events listed above, but this must be booked at least 2 weeks before the event (later transport bookings cannot be accepted). **If you want to access more than 100 track days** at various circuits in Spain/Portugal over the winter season, check out the Club TS membership scheme on our website events page. This offers UK bike transport with storage in Spain and on-going transport to other circuits for any of our winter season events.

**EXTRA TRANSPORT COSTS** apply for items that do not fit in the frame with your bike, but these items can be transported separately at extra cost (for example, £20 each for large kit bags/boxes) The extra cost for taking a second bike is £295.

**A GOODS VALUE FEE (GVF)** applies for all transport bookings – the GVF is 0.5% of the total value that you declare for your bike & kit – for example, if you declare a value of £10,000 for your bike/kit, your GVF will be £50.

**RENTAL BIKES** (2025 S1000RR with €5000 damage liability) are available. Contact us for details.

**IF YOU WANT TO MAKE A BOOKING**, send a booking request to [info@tracksense.co.uk](mailto:info@tracksense.co.uk) and we'll reply with booking instructions.

**PAYMENTS** are by bank transfer (we do not accept cards). A non-refundable & non-transferable deposit of £295 is required when you book. The final balance is due 4 weeks before the event.

**INSURANCE FOR MEDICAL EXPENSES** is compulsory for all track days in Spain & Portugal. Riders that book with us will be sent info/contacts for this. Note that standard travel insurance does not normally cover track days.



**SOME EVENTS ARE OPERATED BY OUR EUROPEAN PARTNERS** (Bike Promotion), and we act as the UK & Ireland agent for Bike Promotion Europe and & ITR-Germany GmbH.

Tel: 01580 890346

Email: [info@tracksense.co.uk](mailto:info@tracksense.co.uk)

Web: [www.tracksense.co.uk](http://www.tracksense.co.uk)

